

Lawrence District Fisheries

KDWPT Fisheries Division Newsletter

Winter 2019

2018 Fall Test Netting Results for Clinton and Melvern Reservoirs

Clinton fish sampling catches exceeded those from Melvern for each species, except for walleye. The good news for both reservoirs was the presence of juvenile blue catfish in the nets. Blue catfish production has been a problem at the lakes, but it looks like it's coming around at both. Channel catfish catch was good at Clinton, and just slightly low at Melvern; but the populations at both should supply solid fishing. Sauger and walleye numbers continued to be low at both lakes, and stockings will continue to try to improve both fisheries. White bass numbers were lower in 2018 than previous years, but some big fish (greater than 16 inches) remain, and those fish should provide some excitement for anglers. Crappie numbers at both lakes were improved. About 31 percent of the crappie sampled at Clinton exceeded 10 inches. Melvern's crappie were smaller, as about 5 percent were longer than 10 inches. Clinton was stocked with wiper in 2018 and it appears that they established a strong year class, and there are still good numbers of wiper weighing more than 5 pounds.

Table 1. Sportfish Catches Per Net at Clinton and Melvern reservoirs.

	Clinton	Melvorn
Blue catfish	0.7	0.3
Channel catfish	5.4	4.2
Sauger	0.9	0.1
Walleye	0.1	0.3
White bass	11.7	2.3
White crappie	46.1	29.6
Wiper	1.8	N/A



White crappie

Douglas State Fishing Lake (SFL) Fall Netting Summary

Netting samples for Douglas SFL showed good populations for black crappie, channel catfish and redear sunfish. Saugeye have only been stocked into the lake in one year (4,588 fingerlings in 2011) for crappie control. However, they may be stocked more often in the future to help control gizzard shad, which were discovered in 2018 netting surveys. Even though saugeye are in low supply, they are big, ranging from 20 to 25 inches long.

Table 2. Sportfish catch per net at Douglas SFL

	2014	2015	2016	2017	2018
Black crappie	5.0	4.0	2.0	5.3	20.8
Bluegill	24.5	7.3	5.0	9.0	8.5
Channel catfish	13.2	8.3	15.0	8.8	4.0
Redear sunfish	15.8	18.3	33.0	39.8	37.3
Saugeye	0.3	0.8	0.3	0.8	0.3
White crappie	3.3	0.7	7.3	9.0	1.5



Redear sunfish

Largemouth Bass Virus Found At Melvern Reservoir

Largemouth bass virus was detected this summer at Melvern Reservoir.

Largemouth bass virus is a pathogen that can cause severe declines in largemouth bass fisheries. It is not transferable to humans, and it usually affects older, larger individuals largemouth bass. Resulting mortality is sometimes observed during warm summer months. Members of a largemouth bass population resistant to the virus typically rebuild the population over time.

Melvern Rearing Pond Harvest Results

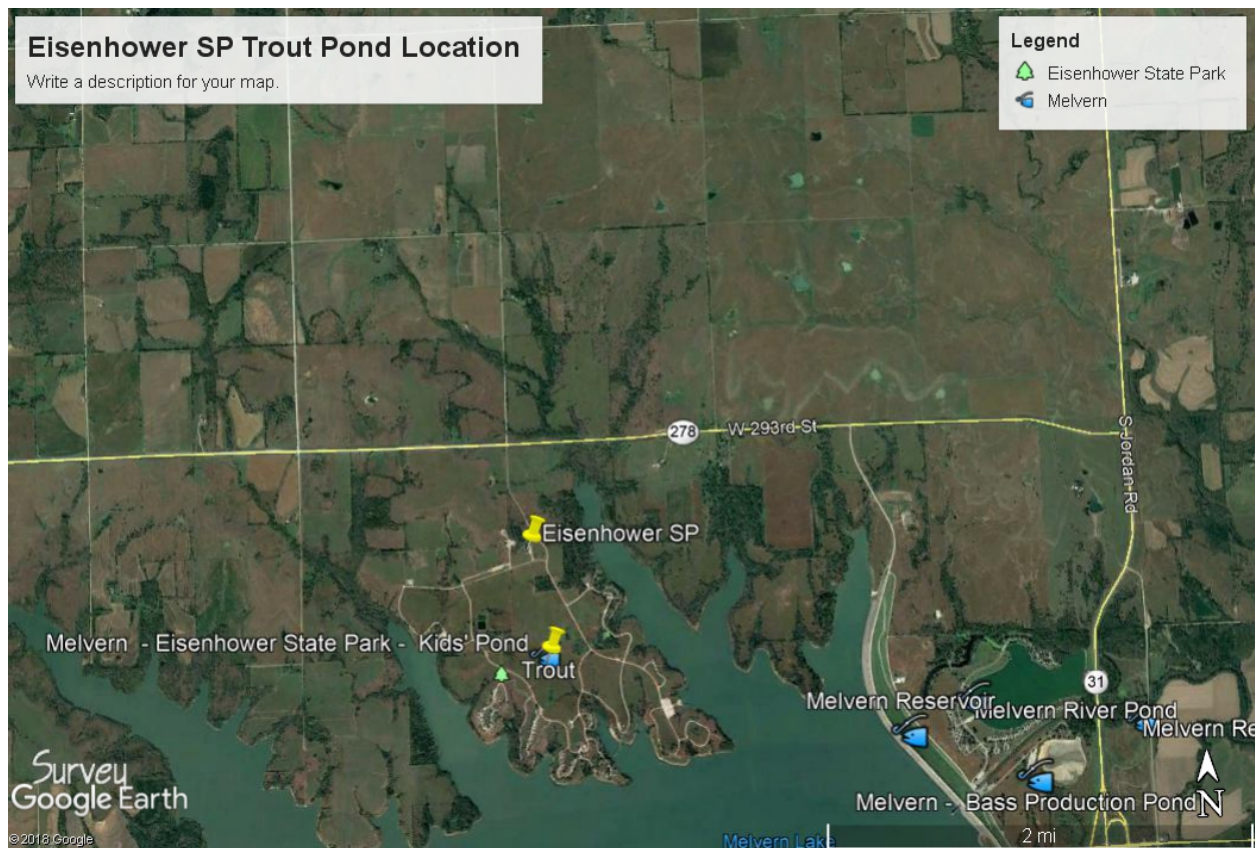
Six hundred pounds of fathead minnows were stocked into the Melvern Rearing pond on March 16, 2018. In April 102 bluegill and 23 redear sunfish adults were stocked. On May 29, 6,093 early-spawn largemouth bass fingerlings were stocked. The presence of blue-green algae again delayed harvest until November 3, due to human health concerns. Only 212, or 3.5 percent, of the largemouth bass were harvested. Thirty bass were tested for largemouth bass virus and the rest were stocked into Melvern Reservoir. The surviving bass had grown well, as average length was 9.2 inches long and average weight was 0.5 pounds. Lengths ranged from 7.6 to 12 inches, and weights varied from 0.2 to 0.9 pounds. Eighty-six percent of the bass harvested exceeded 8.3 inches long, the length thought to be necessary for recruitment to occur for fall stockings of largemouth bass in Kansas Reservoirs according to research. Harvested bass exhibited good condition. Since the rearing pond has had recurring blue-green algae blooms, it will not be used to raise fish this year. Water quality issues, along with delays in harvesting due to blue-green algae blooms, likely resulted in low rates of return the past couple of years. Instead the pond will be treated with dye to try to reduce the severity or maybe even eliminate blue-green algae blooms this year. If the treatment is successful, fish rearing may resume in 2020.



Largemouth bass harvested from Melvern Rearing Pond

New Trout Stocking Location

The Eisenhower State Park Pond is a new trout stocking location in the Kansas Wildlife, Parks, and Tourism's Trout Program. The pond, which was once known as the Kids' Fishing Pond but is now open to all anglers, is located about one-half-mile south of the office. Anyone fishing this pond is required to possess a fish license (unless exempt) and from November 1 through April 15 each angler must have a State trout permit (unless exempt). Trout will be stocked multiple times throughout the season to insure a good supply. Consult the 2019 Fishing Regulations for more information.



Google Earth photo showing location of new trout stocking location at Eisenhower State Park

New Fish Habitat Structures Placed at Clinton Reservoir

U.S. Army Corps of Engineers staff constructed and placed 44 Georgia Cubes into Clinton Reservoir using materials provided by Kansas Department of Wildlife, Parks, and Tourism. These structures should provide enhanced fisheries habitat for a variety of sportfish. GPS coordinates are listed at www.ksoutdoors.com.



Georgia cubes

Fish Stockings Completed in 2018

Stockings are utilized to improve fisheries by introducing a new species to a water body to perhaps occupy an unfilled niche (space) in the ecosystem, to maintain fishable stocks of an already established species, or to manipulate a component of the fishery usually through predation. In urban areas, catchable-size channel catfish are stocked multiple times during the year to sustain good angler success, even when fishing pressure is high. Approximately 11,160 channel catfish were stocked in select Lawrence district waters in 2018, along with 4,037 rainbow trout and 1,483 hybrid sunfish. State and community lakes

sometimes need help, too. Approximately 20,956 channel catfish, 300,000 saugeye, 400,000 walleye and 4,930 wiper were stocked in these lakes within the district. Finally, 40,373 largemouth bass, 350,000 wiper, 1 million sauger and 8.9 million walleye were stocked into Lawrence district reservoirs. These stockings are vital to maintaining or improving existing fisheries and can only occur thanks to our hard-working hatchery staff and contractors!



Josh Jagels stocking largemouth bass at Melvern Reservoir

Richard Sanders, District Fisheries Biologist

Kansas Department of Wildlife, Parks, and Tourism

798 N 1415 Road, Lawrence, KS 66049

785-832-8413, richard.sanders@ks.gov

All content is copyright of Kansas Department of Wildlife, Parks, and Tourism and cannot be copied or distributed without permission from KDWPT.