

El Dorado Wildlife Area News



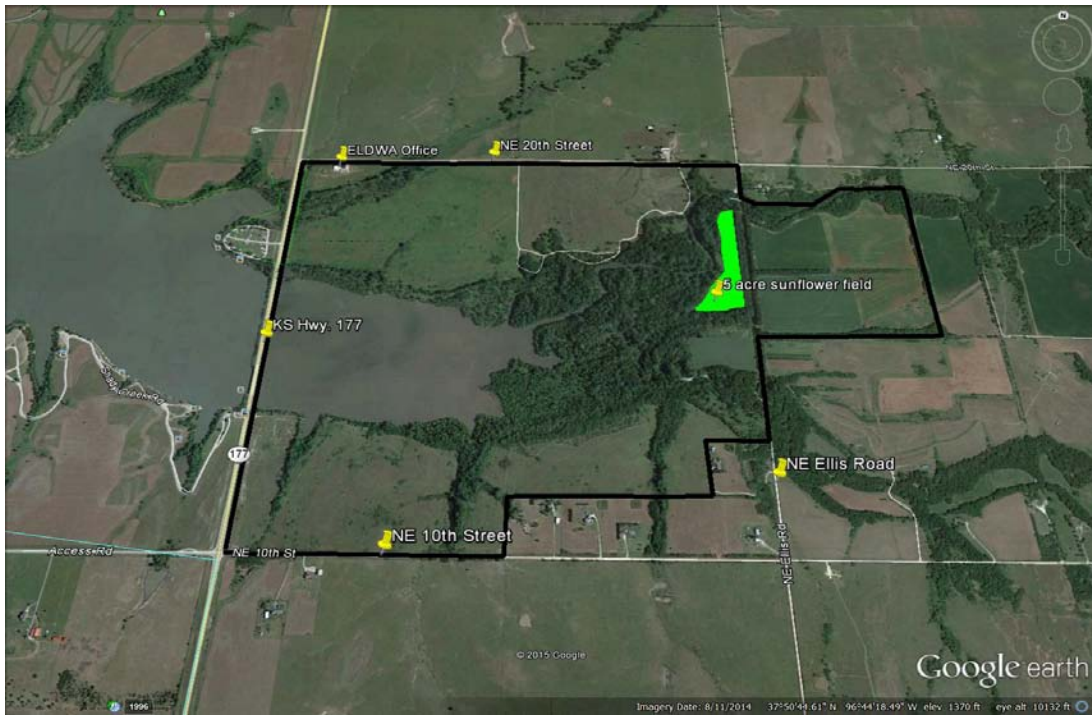
Area News – Summer 2015

2015 Dove Hunting Outlook:

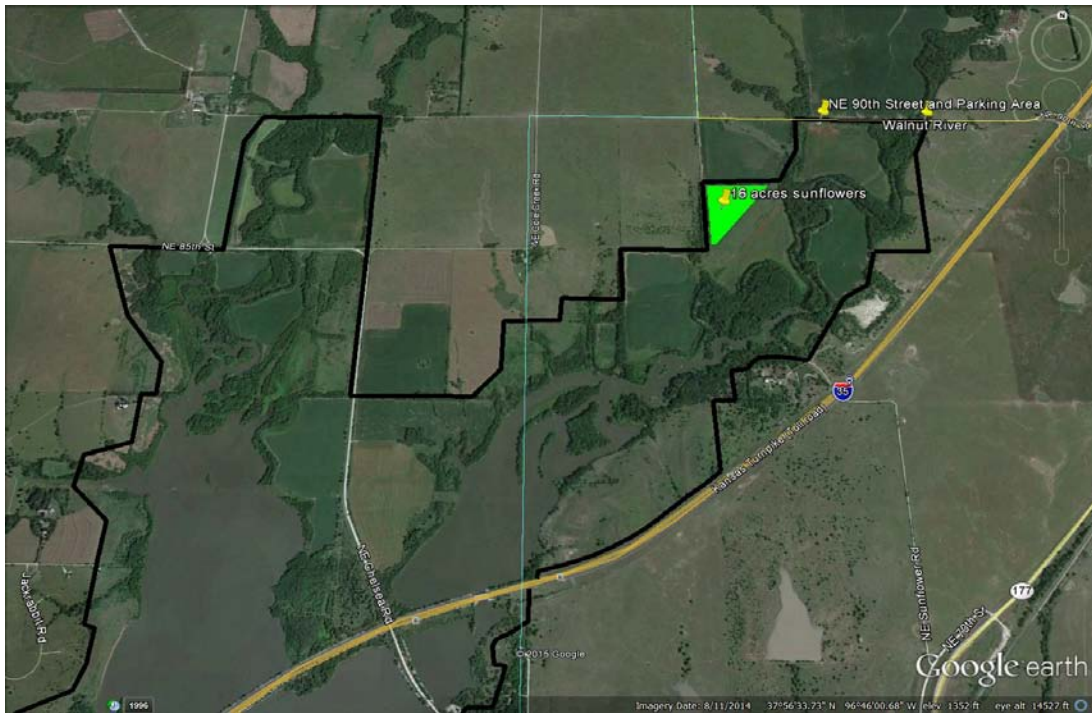
Two sunflower tracts (5 & 16 acres) should provide fair to good dove hunting opportunities at El Dorado Wildlife Area. Portions of each of the sunflower fields will be mowed (if conditions allow) to enhance dove use and hunter access. The 5 acre sunflower field can be accessed from the north by walking 0.1 mile southwest of the parking area south of the junction of NE Ellis Road and NE 20th Street. The same field can be accessed from the south by walking 0.25 mile north of the parking area north of the junction of NE Ellis Road and NE 10th Street. The 16 acre sunflower field can be found by walking 0.35 mile southwest of the parking area that lies west of the Walnut River on NE 90th Street. **Dove hunters using these managed fields must use non-toxic shot.** Dove hunters may be asked to obtain a permit prior to hunting and to report harvest at the conclusion of their hunt. Please assist area staff with evaluating these opportunities by following instructions located at permit stations posted at each field. Hunters are also reminded to please be courteous and aware of other hunting parties while using these fields!

For a brochure and map of the entire wildlife area please visit the El Dorado Wildlife Area web page (ksoutdoors.com) and click on the general information tab at the top of the page. For more information please call area manager, Brent Konen, at #620/767-5900.





El Dorado Wildlife Area – 2015 Managed Dove Hunting Location - Bemis Creek Area



El Dorado Wildlife Area – 2015 Managed Dove Hunting Location – Walnut River Area

Dove Field Hunters Required to Use Non-Toxic Shot:

Beginning in 2013 many managed dove fields on KDWPT public wildlife areas required the use of non-toxic shot. Designated fields at El Dorado Wildlife Area have been included in this requirement and will continue to include all sunflower fields. Signs designating this requirement will be posted at each field.

Lead exposure has long been recognized as a significant threat to waterfowl populations. Concerns arose when large concentrations of lead from spent shotgun shells began to accumulate in traditional waterfowl hunting locations. It was discovered that waterfowl could ingest the lead shot while feeding, and that the lead was toxic and could lead to illness or death. It was also found that some animals that scavenged lead poisoned carcasses could also ingest remaining lead and become afflicted, thus impacting an entire food chain. Losses from lead poisoning were estimated to be significant, and as such a nation-wide ban on the use of lead shot for waterfowl hunting was implemented decades ago.

Concerns of lead exposure to other wildlife species, including doves has become more common. Managed dove hunting fields can provide fast-paced gunning opportunities leading to the deposition of significant quantities of lead within some fields. This lead can potentially be ingested by species foraging in these fields such as doves, ducks, geese, prairie chickens, and non-game species such as songbirds. Concerns may be elevated in fields where no-till planting has been employed (increasingly common) for its soil building and erosion control benefits. As the name implies, no-till planted fields do not incorporate ground tillage into planting preparations. Lead deposited in these fields may be more likely to remain available to wildlife at the ground surface as compared to conventionally planted fields where tillage is incorporated into plans and where lead could be mixed beneath the soil surface.

Non-toxic shot availability and price has improved and its use should help to insure the responsible conservation of our wildlife resources and preservation of our treasured hunting heritage.



Would you like more information about the El Dorado Wildlife Area?

Please contact:

Brent Konen – Area Manager
Kansas Department of Wildlife, Parks & Tourism
1130 Lake Road
Council Grove, KS 66846
#620/767-5900
brent.konen@ksoutdoors.com
www.ksoutdoors.com

