

2007-08 BOBCAT PELT TAGGING REPORT

PERFORMANCE REPORT
STATEWIDE WILDLIFE RESEARCH AND SURVEYS

A Contribution of Pittman-Robertson Funds
Federal Aid in Wildlife Restoration

Grant W-39-R-14

Kansas Department of Wildlife and Parks

Mike Hayden
Secretary

Prepared by

Matt Peek
Furbearer Biologist

Joe Kramer, Director
Fisheries and Wildlife
Division

Mike Mitchener, Wildlife
Section Chief



September 2008

PERMISSION TO QUOTE

This is an annual progress report that may contain information that is subject to future modification or revision. Persons wishing to quote from this report, for reproduction or reference, should first obtain permission from the Chief of the Wildlife Section, Kansas Department of Wildlife and Parks, 512 SE 25th Avenue, Pratt, KS 67124.

EQUAL OPPORTUNITY STATEMENT

This program receives Federal financial assistance from the U.S. Fish and Wildlife Service. Under Title VI of the Civil Rights Act of 1964, Section 504 of the Rehabilitation Act of 1973, Title II of the Americans with Disabilities Act of 1990, the Age Discrimination Act of 1975, and Title IX of the Education Amendments of 1972, the U.S. Department of the Interior and its bureaus prohibit discrimination on the basis of race, color, national origin, age, disability or sex (in educational programs). If you believe that you have been discriminated against in any program, activity or facility, or if you desire further information, please write to:

**The U.S. Fish and Wildlife Service
Office of Diversity and Civil Rights Programs- External Programs
4040 North Fairfax Drive, Suite 130
Arlington, VA 22203**



2007-08 BOBCAT PELT TAGGING REPORT

Prepared by Matt Peek, Furbearer Biologist



An enumeration of bobcats taken in Kansas has been conducted annually since 1978. This project is accomplished with tags provided by the U.S. Fish and Wildlife Service, Office of Management Authority, under the CITES Export Tag Program. In 2007, Kansas was issued 11000 yellow "KS BCAT" tags (#20000-30999). Also on hand were approximately 700 yellow "KS BCAT" tags from the previous season and 700 white general replacement ("FWS REPL") tags from previous years. Six of these tags (21180-21182 and 21190-21192) are thought to have been stolen from a Department office. A total of 141 KDWP employees and offices were issued tags for the 2007-08 furharvesting season.

CITES tags were affixed to the pelts of 5668 bobcats that were taken in Kansas during the furharvesting season. This included 15 bobcats salvaged or confiscated by KDWP. This was the fourth highest harvest on record (**Figure 1**). Harvest decreased by 22% from last year's all-time high of 7234 bobcats, and all five KDWP administrative regions saw a decline in pelt tagging activity (**Figure 2**).

Bobcats were taken in 102 of 105 counties. The number of bobcats taken in each county is presented in **Figure 3**. The estimated number of bobcats taken each day of the season is presented in **Figure 4**.

A total of 1629 furharvesters took bobcats during the season. Bobcats may be taken using equipment authorized in K.A.R. 115-5-1 or salvaged during the harvest season. **Table 1** provides a break down of the methods furharvesters used to take bobcats. **Table 2** indicates the primary species being pursued at the time the bobcat was taken. The number of furharvesters having various total season bags is given in **Table 3**.

After the initial tag allocation, tag accountability was maintained via reports from KDWP employees or offices issued tags. After the season, each was responsible for inventorying unused tags and accounting for all tags they were issued. Unused tags were then destroyed by each tagger or returned to the Emporia office. Bobcats taken outside the furharvesting season (n = 3) were not included in this analysis.

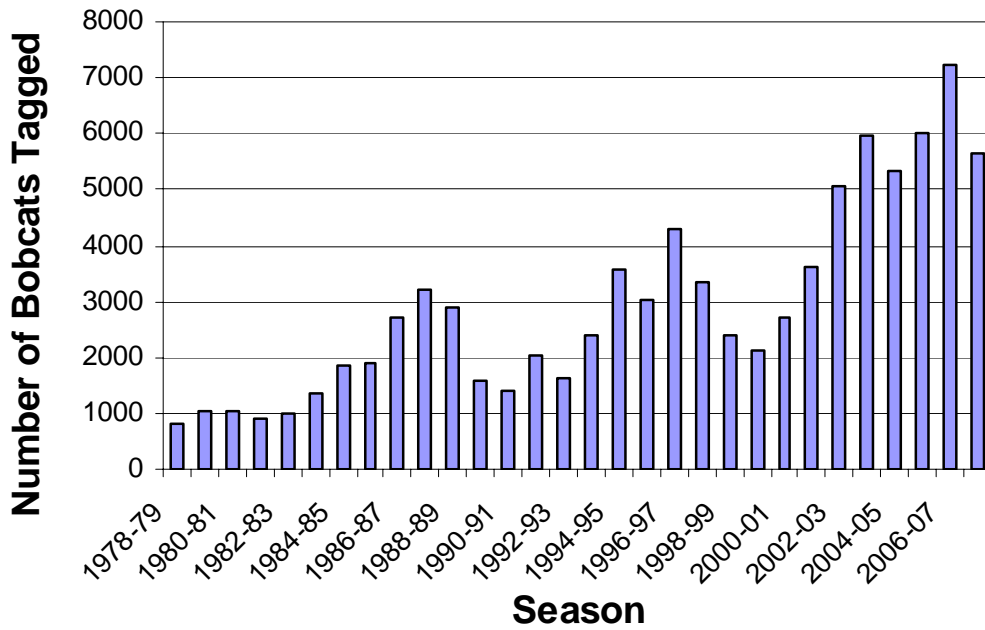


Figure 1. Number of bobcats pelt tagged annually since tagging began in 1978.

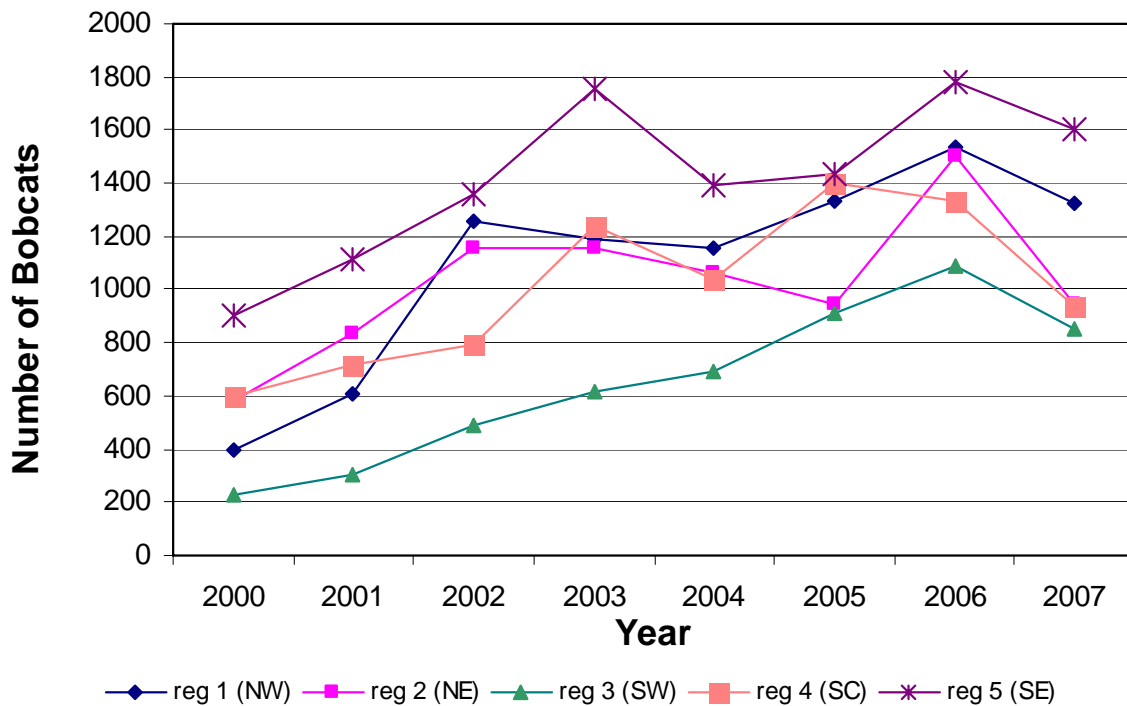


Figure 2. Number of bobcats harvested annually since 2000 in each of KDWP's 5 administrative regions.

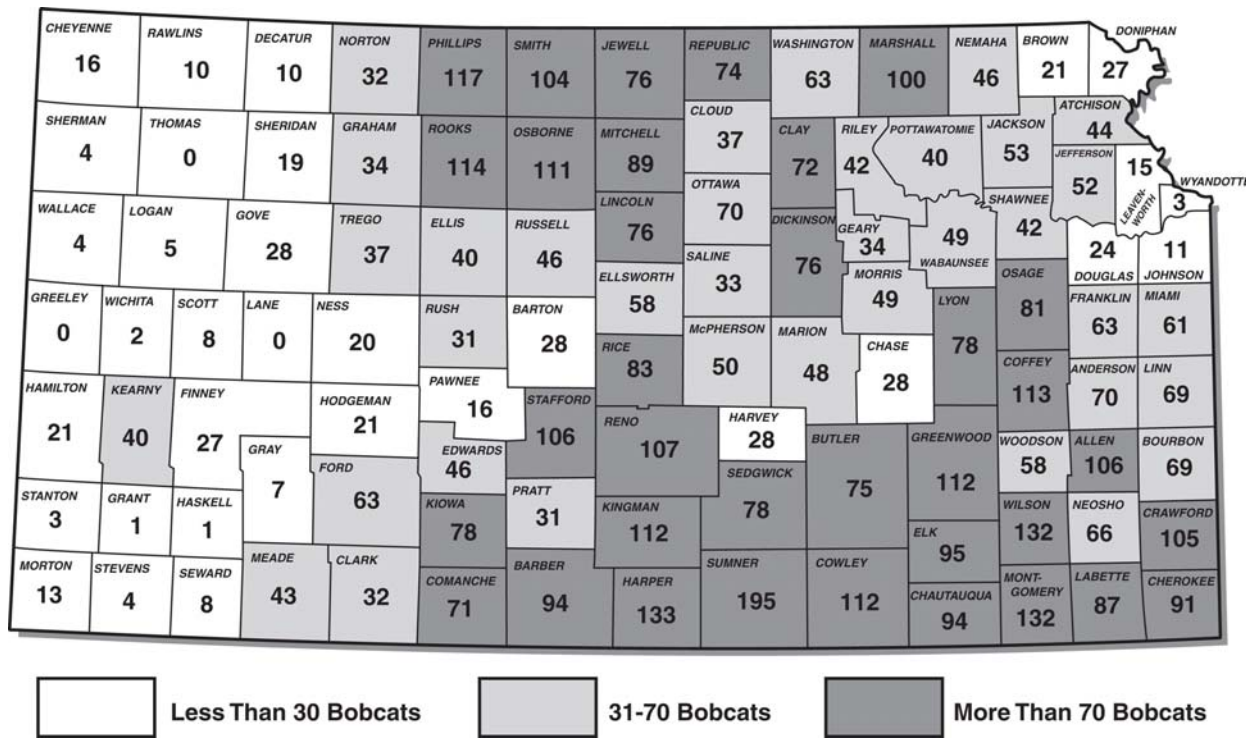


Figure 3. Number of bobcats taken per county during the 2007-08 furharvesting season in Kansas (n = 5653).

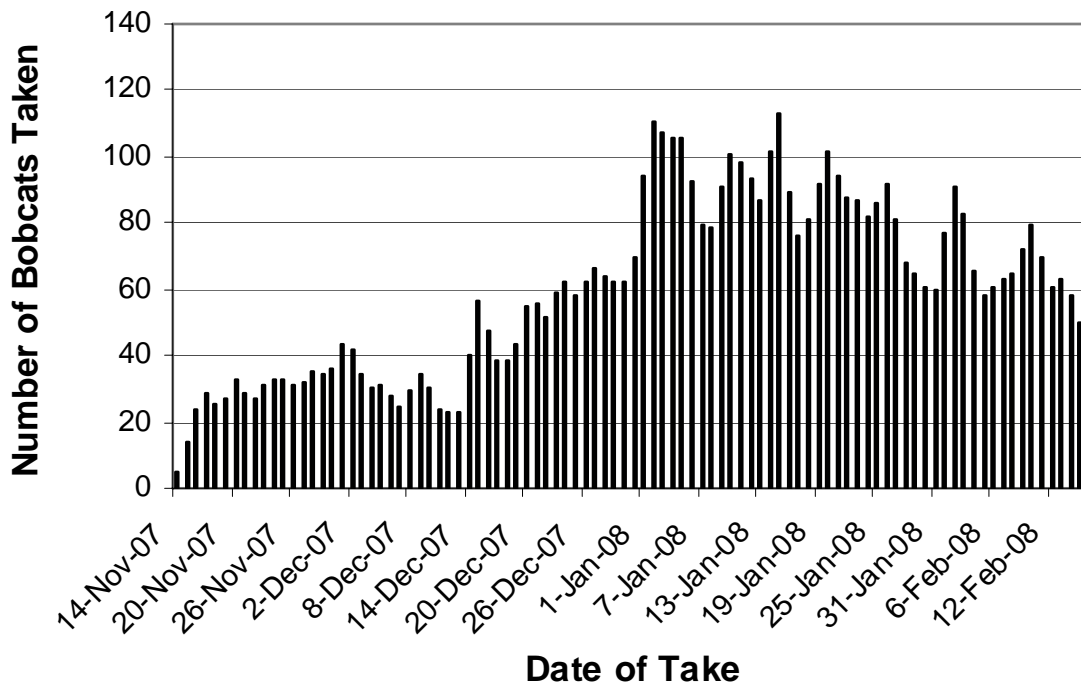


Figure 4. Estimated number of bobcats taken per day during the 2007-08 furharvesting season. (Data smoothed: $y_{(i)} = .5y_{(i)} + .25y_{(i+1)} + .25y_{(i-1)}$.)

Table 1. Methods used to take bobcats during the 2007-08 furharvesting season in Kansas.

METHOD	Number of Furharvesters*	Number of Bobcats taken	Percent of Bobcats taken
TRAPPING			
(1) Foothold Trap	571	2081	36.7%
(2) Body Gripping Trap	195	480	8.5%
(3) Cage Trap	324	985	17.4%
(4) Snare	272	844	14.9%
SUB-TOTAL	1362	4390	77.5%
HUNTING			
(5) Rifle	563	842	14.9%
(6) Shotgun	107	132	2.3%
(7) Archery	63	69	1.2%
(8) Hounds	19	40	0.7%
SUB-TOTAL	752	1083	19.1%
OTHER			
(9) Salvage	151	178	3.1%
(10) Unspecified	1	17	0.3%
SUB-TOTAL	152	195	3.4%
TOTAL	2266	5668	100.0%

Table 2. Primary species being pursued when bobcats were taken during the 2007-08 furharvesting season in Kansas.

SPECIES	FREQUENCY	PERCENT
FURBEARERS		
Bobcat	4922	86.8%
Coyote	271	4.8%
Raccoon	117	2.1%
Fox	5	0.1%
Other	11	0.2%
SUB-TOTAL	5326	94.0%
BIG GAME		
Deer	99	1.7%
SMALL GAME		
Quail	7	0.1%
Pheasant	32	0.6%
Squirrel	3	0.1%
Other	7	0.1%
SUB-TOTAL	49	0.9%
OTHERS		
Unspecified	14	0.2%
Salvage	180	3.2%
SUB-TOTAL	194	3.4%
TOTAL	5668	100.0%

Table 3. Total season bag of bobcats per furharvester during the 2007-08 season.
Data includes 15 bobcats taken by KDWP.

Total Season Bag	Number of Furharvesters	Percent of Furharvesters	Cumulative Percent of Furharvesters	Total number of Bobcats Taken	Percent of Bobcats Taken	Cumulative Percent of Bobcats Taken
1	685	42.05%	42.05%	685	12.09%	12.09%
2	321	19.71%	61.76%	642	11.33%	23.41%
3	166	10.19%	71.95%	498	8.79%	32.20%
4	100	6.14%	78.08%	400	7.06%	39.26%
5	83	5.10%	83.18%	415	7.32%	46.58%
6	51	3.13%	86.31%	306	5.40%	51.98%
7	43	2.64%	88.95%	301	5.31%	57.29%
8	28	1.72%	90.67%	224	3.95%	61.24%
9	22	1.35%	92.02%	198	3.49%	64.73%
10	28	1.72%	93.74%	280	4.94%	69.67%
11	24	1.47%	95.21%	264	4.66%	74.33%
12	16	0.98%	96.19%	192	3.39%	77.72%
13	6	0.37%	96.56%	78	1.38%	79.09%
14	11	0.68%	97.24%	154	2.72%	81.81%
15	3	0.18%	97.42%	45	0.79%	82.60%
16	6	0.37%	97.79%	96	1.69%	84.30%
17	6	0.37%	98.16%	102	1.80%	86.10%
18	5	0.31%	98.47%	90	1.59%	87.69%
19	2	0.12%	98.59%	38	0.67%	88.36%
20	3	0.18%	98.77%	60	1.06%	89.41%
21	1	0.06%	98.83%	21	0.37%	89.78%
22	3	0.18%	99.02%	66	1.16%	90.95%
23	4	0.25%	99.26%	92	1.62%	92.57%
24	1	0.06%	99.32%	24	0.42%	93.00%
27	2	0.12%	99.45%	54	0.95%	93.95%
28	1	0.06%	99.51%	28	0.49%	94.44%
29	1	0.06%	99.57%	29	0.51%	94.95%
30	2	0.12%	99.69%	60	1.06%	96.01%
36	1	0.06%	99.75%	36	0.64%	96.65%
37	1	0.06%	99.82%	37	0.65%	97.30%
45	1	0.06%	99.88%	45	0.79%	98.09%
53	1	0.06%	99.94%	53	0.94%	99.03%
55	1	0.06%	100.00%	55	0.97%	100.00%
Total	1629			5668		